

Elkhorn River Valley

Transmission Project



ISSUE 07

WINTER 2018

For More Information



Visit the Elkhorn River Valley Transmission Project website at:

www.ERVTransmissionProject.com

If you would like to leave a general comment for the project team, or contact the right-of-way team or your right-of-way agent, please call: (402) 590-8088.



Staying in Touch

If you are a directly impacted landowner and have questions or concerns throughout the remainder of this project, we encourage you to stay in touch with land agent, Shelby Mayash. He will help to address your concerns and issues that may come up during the construction of this project.

Shelby Mayash
Shelby.Mayash@hdrinc.com
402-319-9128

If you do not wish to receive future messages, please call the toll-free hotline, 402-590-8088 or visit the project website and leave a comment indicating your desire to be removed from the mailing list.

UPDATE FROM THE PROJECT MANAGER

We'd like to take a moment and wish you all a happy new year. In 2018, we'll be seeing a lot of activity in the construction of the nearly 23 miles of transmission line between Washington and Dodge Counties. You may have already noticed that our contractors have been out preparing the land by removing trees and brush and installing needed fences and gates. The line construction contractor has been installing foundations, assembling structures and stringing wire.

In this edition, you'll meet our contractors and learn more about what they will be doing during construction of transmission lines. Again, please let us know if you have any questions about the project. We look forward to continuing to work with you as we increase reliability of the power grid throughout the area. All project information can be found at www.ERVTransmissionProject.com. Questions and comments can be emailed to the project team at info@ERVTransmissionProject.com.



Meet the Contractors

To construct this project, it will take a crew of specialists from tree cutters to linemen. We have contracted with some of the best contractors from around the area and country to assist in the construction of this transmission line. These crews are all managed by OPPD Construction Manager Gary Martin. The following crews will be out in the field during construction activities:

TERRY HUGHES TREE SERVICE

Locally owned Terry Hughes Tree Service will be removing all trees, stumps and brush within the right-of-way easement as well as any danger trees outside of the right-of-way/easement.



DIETZEL ENTERPRISES, INC.

Dietzel Enterprises is installing the foundations with concrete provided by Gerhold Concrete. Dietzel will use drills, excavators, loaders and lifting equipment as they install the 29 pier foundations and the 189 direct

(Continued on back cover.)

Project Details:

The Elkhorn River Valley Transmission Project consists of a new 161 kV transmission line to be built between OPPD's existing Substation 1226 (located near Hwy 91 and County Road 27) west of Blair, Nebraska and OPPD's existing Substation 991 (located on U Boulevard and S. County Road 26) east of Fremont, Nebraska. A new 69 kV line will be built between Substation 991 and Fremont Department of Utilities existing Substation B (located on North Luther Road and US 30) in Northeast Fremont.

The Purpose of the Project is to:

- Improve reliability
- Increase future opportunities for energy diversification
- Serve a growing demand for electricity
- Provide economic development opportunities

Interesting Facts:

- Project length: approximately 22.9 total miles (3.5 miles 69 kV/19.4 miles 161 kV)
- Estimated total cost: approximately \$35 million dollars—shared between OPPD and Fremont Department of Utilities
- Construction Begins: Fourth Quarter 2017
- Estimated In-service: Fourth Quarter 2018
- Southwest Power Pool Project



PROJECT SPOTLIGHT

Galvanizing for Future Reliability

The electric power utility industry typically uses designed steel poles for the transmission of power. These poles have been utilized for high-voltage transmission by power companies for over 100 years. There are several benefits associated with this type of structure. Steel poles are typically stronger than wood, which allows for longer spans between each pole. They are generally reliable in supporting conductors with less frequent maintenance and they can be designed to withstand extreme weather conditions, which is especially important in this region. Galvanizing the steel makes the poles well-suited for a variety of weather conditions, so they typically show a lower corrosion rate. They have a much longer lifespan than wood, typically with an expected usefulness of 80 or more years. The poles are created by bending them into shape from a steel plate, then welded and galvanized in pole sections up to 60 feet long.

Safety First!

During construction, we will be installing temporary construction fencing in areas where needed. As on any construction or worksite, there are potential hazards that need to be avoided. Your safety and the safety of our crews is important to us. Please stay clear of all construction areas and activities. If you need to talk with someone from the project team, please call the hotline at (402) 590-8088. Please do not visit the construction site in-person. We will make sure your question or comment is addressed in a timely manner.

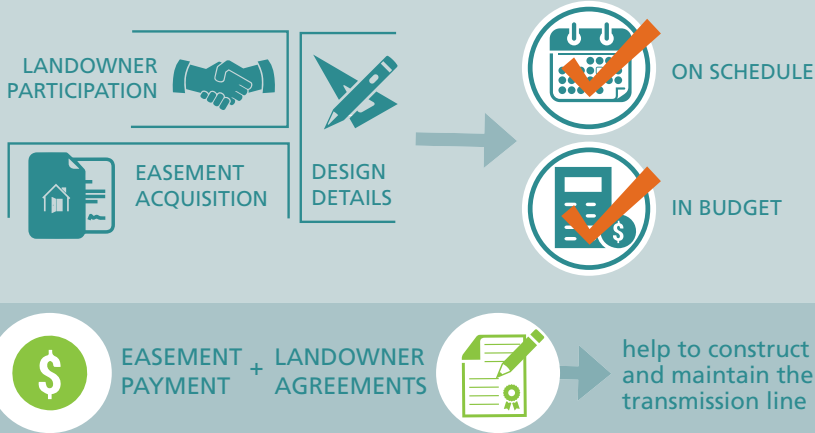


What We've Been Up To – Next Steps

Acquisition, Construction & Restoration

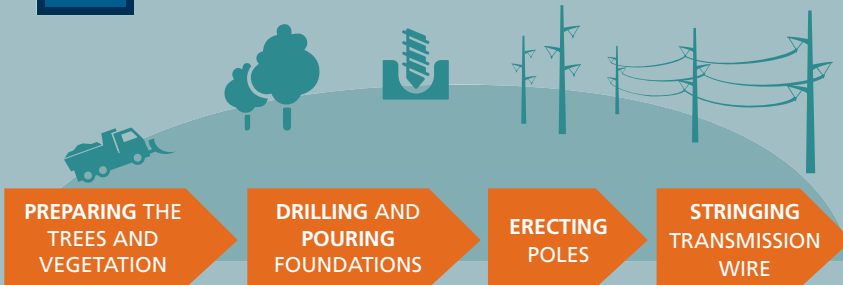
1

Easement Acquisition & Access Rights



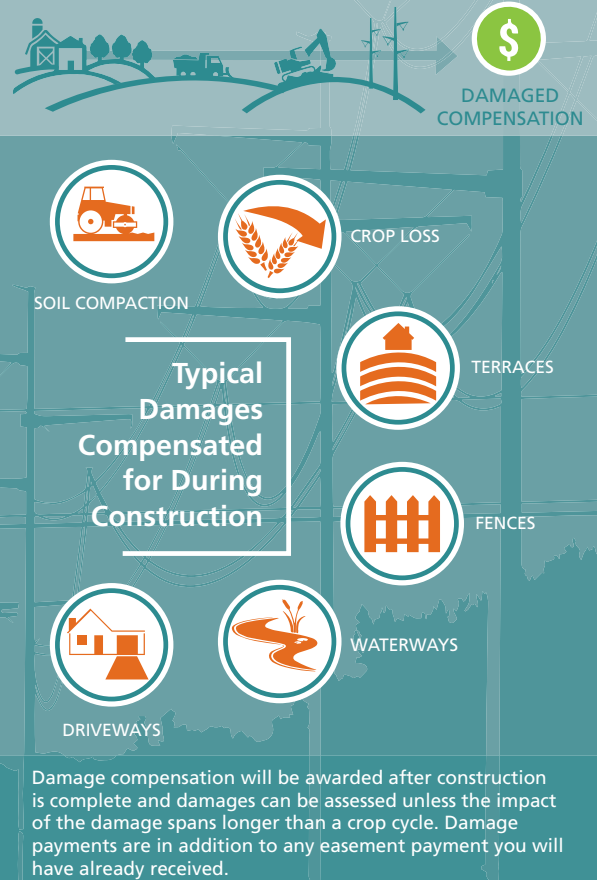
2

Construction



3

Property Restoration



Staying in Touch

If you are a directly impacted landowner and have questions or concerns throughout the remainder of this project, we encourage you to stay in touch with your land agent. They will help to address your concerns and issues that may come up during the construction of this project.

Project Timeline





ELKHORN RIVER VALLEY TRANSMISSION PROJECT
 8404 INDIAN HILLS PLAZA
 OMAHA, NE 68114-4098
www.ERVTransmissionProject.com

If you do not wish to receive future messages, please call the toll-free hotline, (402) 590-8088 or visit the Project website and leave a comment indicating your desire to be removed from the mailing list.



ISSUE 07 | WINTER 2018

WHAT'S INSIDE?

- Project Manager Notes
- Meet the Contractor
- Project Spotlight: Galvanizing for Future Reliability
- Property Restoration Efforts



Frequently Asked Questions

How long will the construction process take place?

Construction began during the fall of 2017 and will continue through most of 2018. We estimate that the Elkhorn River Valley Transmission line will be in-service in the fourth quarter of 2018. Energizing this transmission line will provide more reliability to the region and serve the growing demand for electricity in the area.

What can you tell us about the structures and how far apart they will be?

The majority of the structures on this project are single, free standing galvanized steel poles. The poles on the 69kV transmission line will be approximately 60 feet tall and 2 to 5 feet in diameter. The span between each pole will be about 300 feet. The poles on the 161kV line are approximately 80 to 100 feet tall, 3 to 7 feet in diameter and will be spaced 600-800 feet apart.

If you have any questions regarding the right-of-way process, feel free to call the hotline at 402-590-8088.

MEET THE CONTRACTORS

(Continued)

embedded structures along the 22.9 miles of transmission line.



TIMBERLINE CONSTRUCTION

Timberline is the company that will be doing the main construction on the project; activities will include hauling and erecting poles, stringing of wires and final clean-up.

If you have questions about our contractor's please contact the hotline at **402-590-8088**.



Galvanizing for Future Reliability – *Learn more inside!*